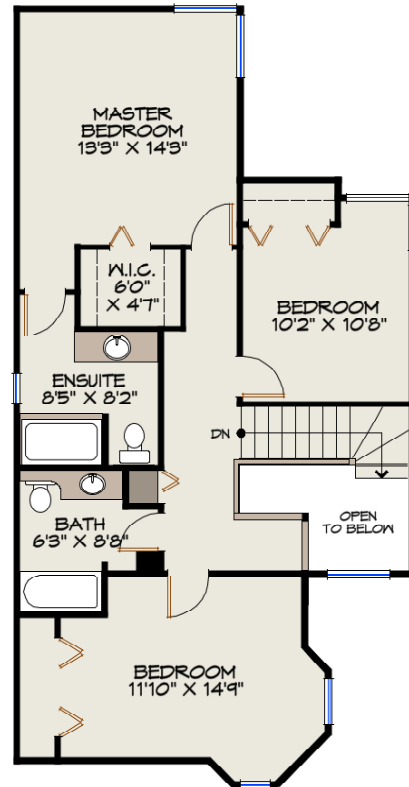
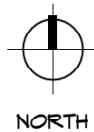


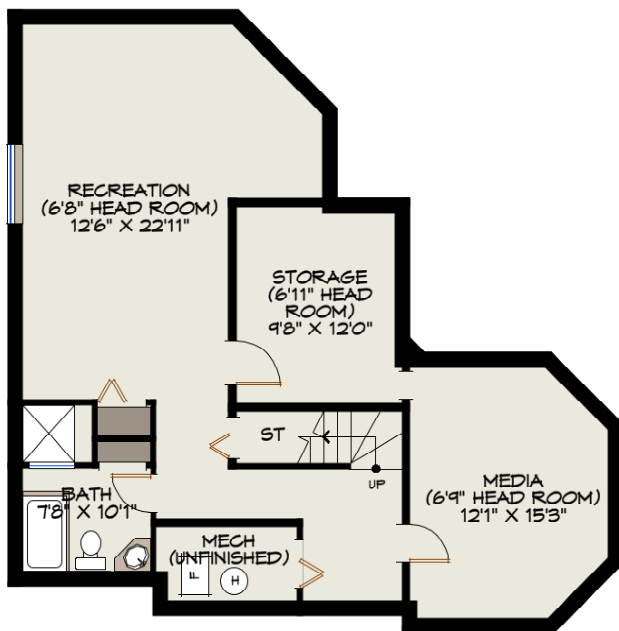
MAIN LEVEL



UPPER LEVEL



TRUESPACE DESIGN
 PREMIUM REAL ESTATE PLANS
 604-986-8649 / 778-628-5072
 WWW.TRUE-SPACE.CA



LOWER LEVEL

4848 UNDERWOOD AVENUE
 NORTH VANCOUVER, BC

UPPER LEVEL: 913 SF
 MAIN LEVEL: 1037 SF
 LOWER LEVEL (HEIGHT VARIES): 991 SF
 FINISHED FLOOR AREA: 2941 SF
 UNFINISHED LOWER LEVEL: 47 SF
 TOTAL FLOOR AREA: 2988 SF

GARAGE: 413 SF

ALL INFORMATION FURNISHED REGARDING THIS PROPERTY IS FROM SOURCES DEEMED RELIABLE BUT NO WARRANTY OR REPRESENTATION IS MADE TO THE ACCURACY THEREOF.

ROYAL LEPAGE | **Sussex**
Deanna Nuesslein
 Office: 604-986-9711
 Cell: 604-657-3057

dnuesslein@nuessleinrealty.com
www.nuessleinrealty.com